

Vehicle Conversion

FLEET SERVICE Ltd

SMMT
DRIVING THE
MOTOR INDUSTRY



Company Profile

Fleet Service Ltd was formed in 1986 under its original name of GB Motors. The company changed its name in 1989 to Fleet Service to reflect the nature of the business it was undertaking.

Fleet Service implemented the then BS5750 in 1993 and was the first independent garage in the UK to achieve this accreditation. Fleet Service continually strives to improve the service it provides to its clients and keeps abreast of market changes.

In 1994 Fleet Service relocated to its current premises on Ribbleton Lane, Preston to aid further expansion. Fleet Service is an approved Department of Transport testing facility for class's 4, 7 and 5a. Due to the layout of the class 7 facilities we have the ability to undertake the very large motor homes.

As a company Fleet Service tailors its operation to form working partnerships with key clients. It was to achieve this that a satellite workshop was opened in Garforth, Leeds, to support a major construction company who had a requirement to fulfil.

Fleet Service has been an approved contractor for the Ministry Of Defence for over 10 years.

The objective of the management of Fleet Service is to provide its clients with a quality and reliable service, which conforms to the customer's specified requirement and the industry standards.

The aim of the company is to reduce vehicle costs whilst at the same time increase vehicle utilisation. The Fleet Service workshop is open 24 hours a day Monday to Friday.

In 1996 a new division within the company was formed called FleetCare. This division was created as a result of a customer's requirement. FleetCare carries out specialist security work on high value load carrying vehicles. FleetCare now offers a full range of security products backed by a nationwide support to the vehicle market.

To minimize the potential effect of product liability all safety and hazardous operations are determined and evaluated.

Third party assessment and certification ensures that products are supplied to contract requirements.



Fleetcare

Specialist Vehicle conversions and UK support

Fleet Service has a division within the Company that designs and builds specialist vehicles for various markets. The primary market's for this side of the business are CVIT (Cash & Valuables In Transit), Pharmaceutical Delivery vehicles and Utility vehicles.



Medical product delivery vehicle

In these fields Fleet Service is the UK market leader in providing the most reliable vehicles whilst at the same time affording the end user with the lowest through life running costs. This is achieved by a rigorous process of understanding the client's requirements and budget and then working with the client to deliver them the correct tool for the job.

All conversions are supported in the field by our team of field based engineers who attend client's depots to maintain the specialist equipment fitted to the vehicles.



Specialist CVIT Vehicles

Fleet Service fully understands that no two clients operate their fleets in exactly the same way. This is why all of our vehicle conversions and control systems are specific to each individual customer.

We are able to achieve this because we initially require a full understanding of the client's daily operation.

Because of the lean manufacturing process's we follow we are efficient and flexible when it comes to specification changes.

A key feature of Fleet Service is that we have our own in house electrical design team who also carry out software writing, software changes as and if required.

There has been a substantial increase over the last 20 years of ever more supplementary electrical equipment being fitted to vehicles. Due to the very complex systems that we design and fit into the market place we have considerable experience in managing electrical requirements.

At Fleet Service every installation follows a strict pre design process to determining the correct power supply required and the ability of the vehicle to be able to manage that supply adequately whilst at the same time limiting any driver input as far as possible.

All vehicle conversions are carried out with the aim of providing a product that will provide a reliable, cost effective solution for the life of the asset. The lifetime running cost are paid particular attention to when the initial specification is drawn up prior to agreement.

BSI ISO accredited Workshop Service and design facilities

The scope of registration covers Vehicle maintenance and design of vehicles and systems By following this process in conjunction with our documented COP (Conformity Of Production) procedures Fleet Service ensure not only the correct product is built but also ensures its compliance with the recent VCA requirements.



2

VCA- Vehicle Certification Agency

Fleet Service Ltd has achieved the status of a recognised N1 Enhancement Scheme Approved Converter which means we have passed the VCA's high standards to carry out modifications and document accordingly to allow us to self certify specific conversions.

The Process

An initial review is carried out with the client to determine their exact requirements. At this point an understanding is also gained of their operation requirements and issues they may have with the current vehicle type they currently operate.

From this point a basic vehicle design is drafted. This is carried out by using Autocad software for the vehicle design and layout.



Project design for door system



Image of a vehicle with safes overlaid for representation

At the second review meeting this design is discussed and verified with the client. At this stage a full review is also carried out with regards to any electrical installations that are to be installed.

Vehicle wiring harness design and panel designs are also carried out in house with the use of specialist software packages. Once these have been verified they are sent to specialist harness and panel manufacturers to be assembled.

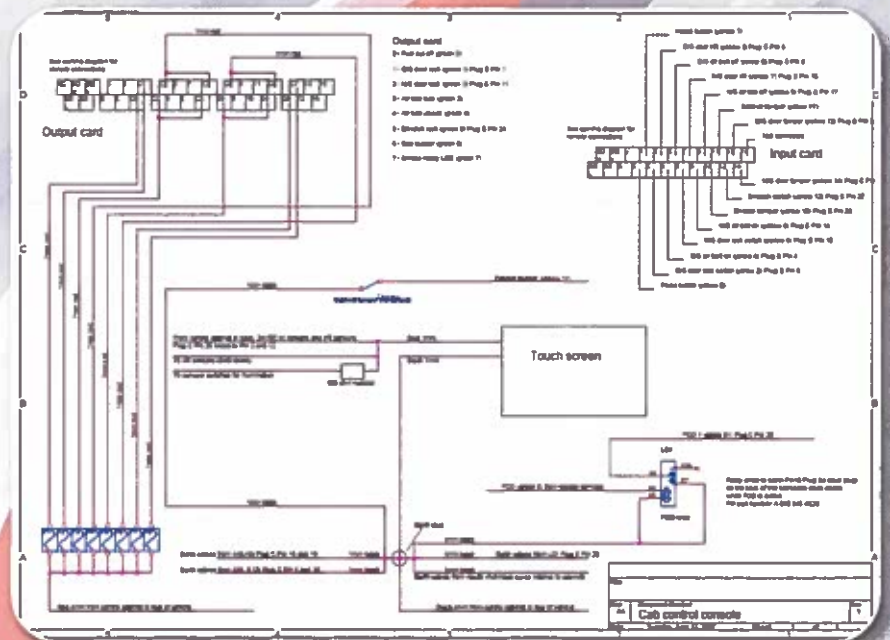
For smaller volume builds the actual wiring harnesses are manufactured on our premises.



An example of the types of harness's Fleet Service routinely have manufactured

All wiring is documented and then formatted into wiring diagrams for the assembly department and field support engineers.

Wiring Diagram



A final pre-production review is held with the client to confirm the specification is correct. The vehicle can now go into production. The vehicle now follows the full COP to ensure compliance.

Bespoke manufacture and design solutions

Fleet Service has the ability to react to short lead times aligned with rapid prototyping to resolve any urgent operational issues. Many of these upgrades have and can be fitted on site by our team of mobile engineers.

In the example below, a custodial vehicle's escape release hatches were causing false activations for the operators. Fleet Service designed kits for 440 vehicle, produced installation documents and distributed the kits around the UK for local fitment. This was completed in less than 3 weeks from final design sign off.



Further examples of bespoke solutions



Large Key capacity safe



Bespoke racking system



Collection safe

5



FLEET SERVICE Ltd

© Fleet Service Ltd 2015



HVAC Guard

Drug Safe

Fridge Guard



Bespoke protection covers

Vehicle Power Management & control.

Fleet Service has many years expertise in vehicle power systems and vehicle control systems.

We can utilise various different solutions fully dependant on the issue and the budget available. Fleet Service understand that if a certain set of vehicles are nearing their end of life sometimes a more cost effective solution must be found.

All control software is written in house which allows us the flexibility to effect any changes that may be required.



Control products PLC & HMI units

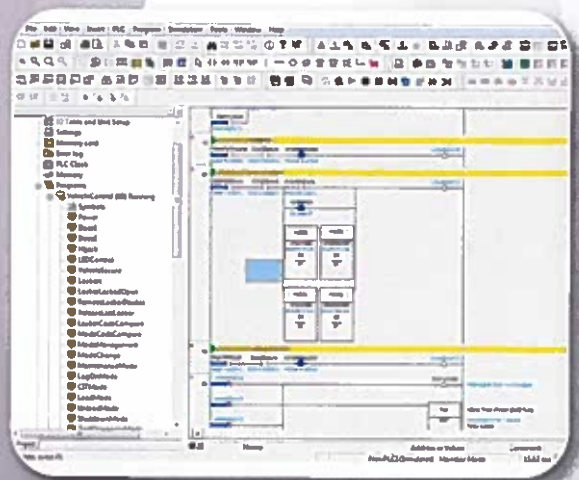
Example of a large control panel

PLC

Communi-cations

Power management

Ancillary battery



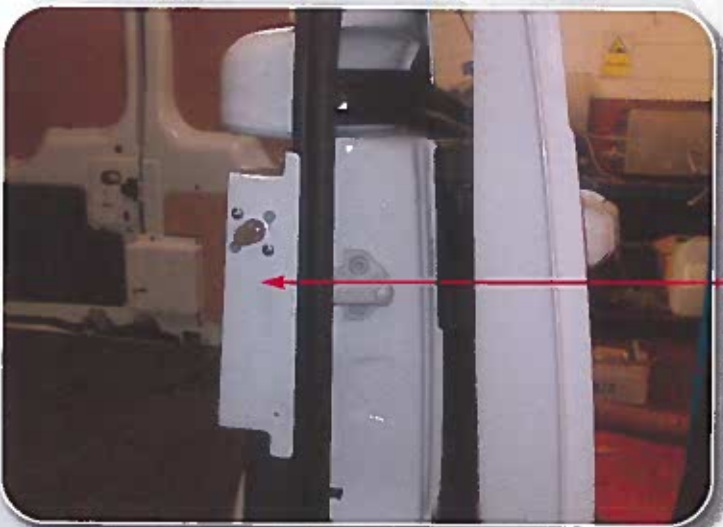
Software logic programmes written in house

Service Engineers Vehicles



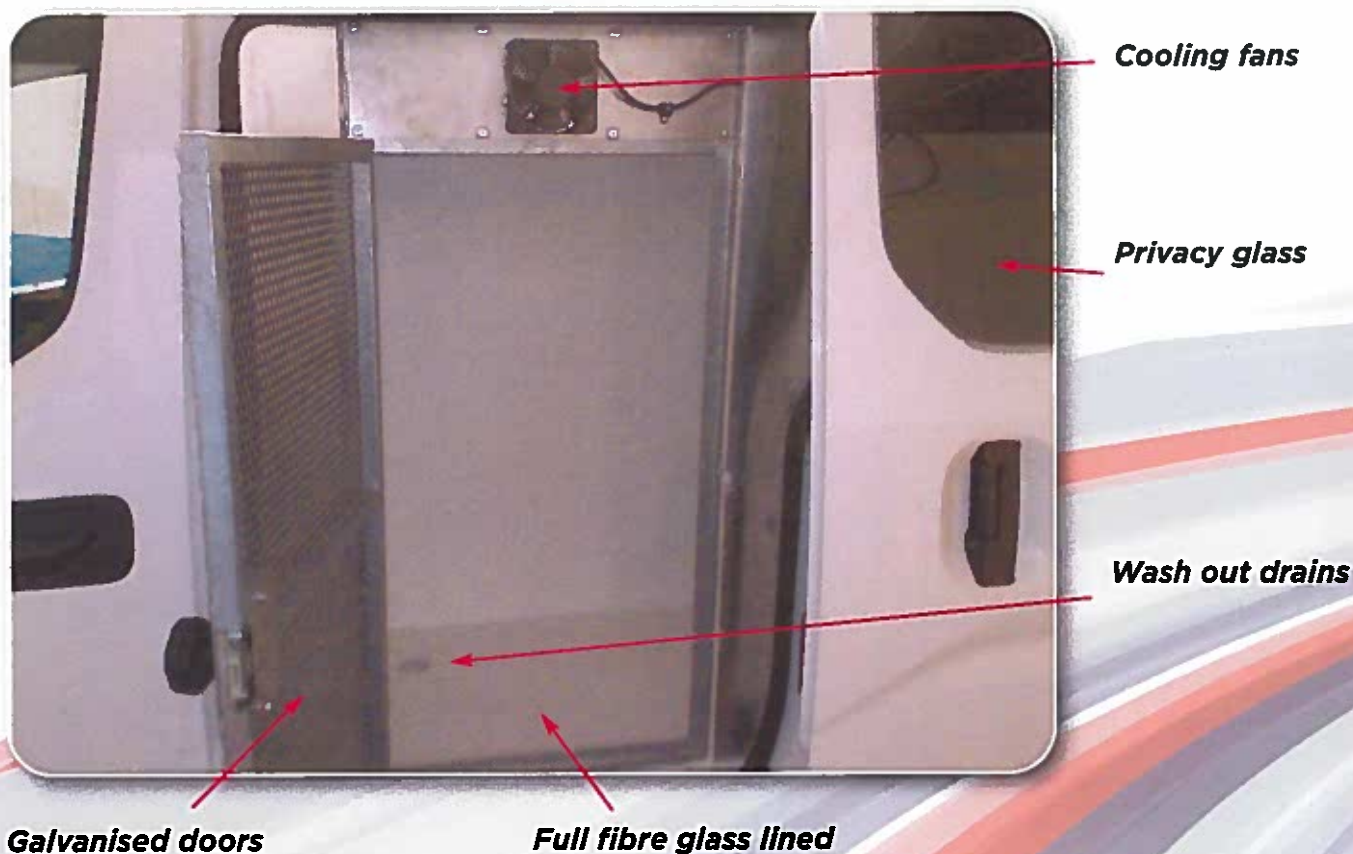
Racking systems LED lighting

*Heavy Duty Slam locking device
back door*



*Heavy duty slam locking device
side door*

Utility & Dog Van examples



LED lighting



General small utility van



Low profile beacons

Low profile roof vent

Roof loading system



GRP lined with drains



Goods Vehicles



7.5 ton box body with tail lift and security enhancements



Large high security trunk vehicles

Armoured Vehicles



3.5 ton armoured sprinter van

Multi door access configurations



Rear 2 door entry system



Side access 2 door entry system

Vehicle Glazing

At Fleet Service we have our own in house glazing fitters who are available to attend clients premises and install various types of vehicle glazing from a simple like for like replacement to enhanced glass as required.

Some of the products we fit are:

- Ballistic bullet proof glass
- Supaglass anti bandit protection film. (one of the most cost effective ways to reduce vehicle entry and theft.
- Polycarbonate glass enhancement



Armour materials

Fleet Service have many years experience using various types of armouring materials.

Subject to payload load requirements and budgets.

Fleet Service are able to supply:

- Armour steel
- Aramid
- Kevlar
- Polyethalyne
- GRP moulded armour.

Other Products routinely fitted by Fleet Service include:

- Vehicle forward facing accident recording CCTV
- Full hard disc recording multi camera CCTV systems
- Various cyclist protection devices
- Security locking devices
- Exterior & interior lighting
- Health & safety products
- Livery and decals

Field Support

At Fleet Service we understand that vehicles cannot always be brought to a workshop especially if they are based around the UK. To this ends Fleet Service has it own Field engineers who are based from home covering the whole of the UK.

These engineers carry out routine planned maintenance work on site as well as reactive call outs. Should for any reason a vehicle have the necessity to come into the workshop Fleet Service can arrange nationwide collection and delivery either by our insured drivers or transporter operators.

All field engineers are familiar and trained on all of the products we supply and are additionally also very familiar with many other vehicle types. All vehicles are fully equipped and the engineers are controlled by a dedicated after sales support department.

All customers have a SLA in place which is the benchmark of the service we provide.



Contact Details

For additional information please contact Graham Beston on

Telephone:

01772 704130

Email:

grahambeston@fleetservice.co.uk

13



FLEET SERVICE Ltd

© Fleet Service Ltd 2015





FLEET SERVICE Ltd

© Fleet Service Ltd 2015

Digital Print by T. Snapp & Co. Ltd., Preston. Tel: 01772 254553